

## Installation Instructions

**PureClarity™** 



Installation Kit for Dental Unit Waterline  
Purification System

R<sub>x</sub> Only

MD

Product intended for use by a  
Licensed dental professional.

A01268\_revA1125

	<b>CAUTION: ALWAYS turn water supply OFF before disconnecting or splicing into waterline tubing.</b>
	<b>CAUTION: Before cutting any waterlines, confirm that the internal diameter of the water is 1/8 inch.</b>

## Indication for Use

For installing a PureClarity bacterial waterline filter onto a dental unit waterline which does not already have luer-lock connectors present, wherein the PureClarity filters remove harmful bacteria, pathogens, and contaminants through a chemical-free process.

## Included Parts

- (1) PureClarity™ waterline filter
- (1) Sediment pre-filter
- (1) 20 ml shock syringe
- (1) Female luer-lock fitting with 1/8-inch barbed end (connects to the waterline that extends from, or attaches to, the scaler)
- (1) Male luer-lock fitting with 1/8-inch barbed end (connects to water source line)
- (2) Compression clamps

## You Will Need

- Scissors or sharp tubing cutter
- Marker
- Pliers (for tightening clamps)

## Steps

### 1. Shut Off the Water Supply

- Be sure the water source to the ultrasonic scaler is turned **OFF**.
- Relieve any pressure in the line by briefly activating the scaler.

### 2. Locate Installation Point

- Measure **6 to 8 inches** from the back of the scaler along the waterline tubing.
- Use a marker to mark the spot where the tubing will be cut.

### 3. Cut the Waterline

- Using a sharp tubing cutter or scissors, cut the tubing at the marked spot.
- You will now have two open ends:
  - ▶ One coming off the back of the **scaler**
  - ▶ One coming from the **water source**

### 4. Install the Luer-Lock Fittings

- Insert the **female luer-lock fitting** (barbed end) into the tubing leading from the dental unit (A).
- Insert the **male luer-lock fitting** (barbed end) into the tubing from the water source (B).



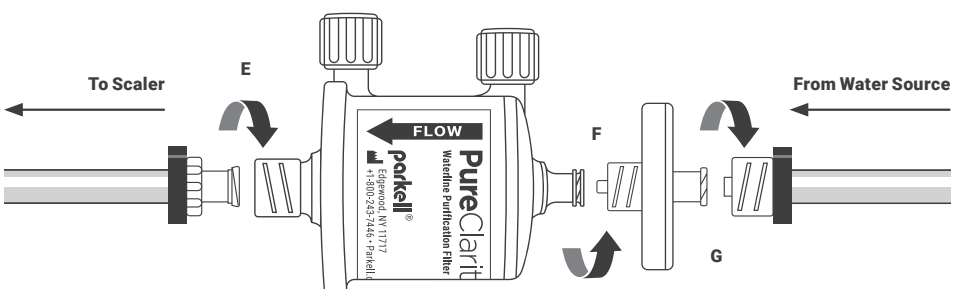
### 5. Secure with Compression Clamps

- Slide a compression clamp over each fitting connection (C).
- Using pliers, tighten securely so the tubing seals tightly around the barbs (D).



### 6. Install the PureClarity Filter

- **! IMPORTANT ! – Shocking the ultrasonic scaler should be completed prior to installing PureClarity filter. Following shocking, your treatment water should be tested to ensure it meets Federal (EPA, CDC, and OSHA) and State requirements (namely, that it contains <500CPU/mL of bacteria). In this regard, it is recommended that water testing be performed (or repeated) approximately 3 days after waterline shocking, as tests immediately after shocking may result in false negative testing results.** Instructions for using Parkell's Shock Syringe for loading shock solution into your dental unit or associated lines are on page 2.
- **NOTE:** Before installing the PureClarity filter, it is recommended to write date of installation in the designated area on the label for future reference.
- **Align PureClarity filter so **FLOW** arrow points toward the ultrasonic scaler.** Using hand pressure, attach filter to the **female luer-lock** on the waterline tail from the dental unit. Twist to ensure secure connection without over-tightening (E).



### 7. Attach the Sediment Filter

- Connect the sediment filter to the **other side** of the PureClarity filter (F).
- Attach the **male luer-lock (from the water source line)** to the remaining unconnected end of the sediment filter (G).

### 8. Verify All Connections

- Check that all luer-locks are fully engaged.
- Confirm all compression clamps are snug so the tubing cannot be pulled off.

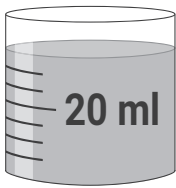
### 9. Test the System

- Turn the water supply back on.
- Inspect carefully for any drips or leaks at each connection point.
- If leaks are found, tighten clamps or luer-locks where needed.

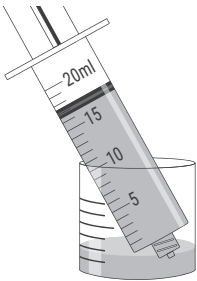
**Your PureClarity waterline filter system is now installed and ready for use.**

Shocking Dental Unit

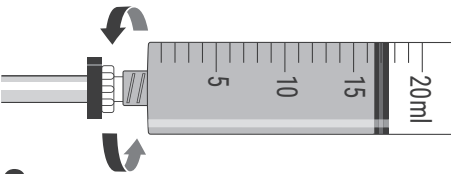
1. Select a clean, stable container that holds at least 20 ml of liquid shock solution.



2. Draw up the shock liquid into the syringe to at least the 15 ml mark.



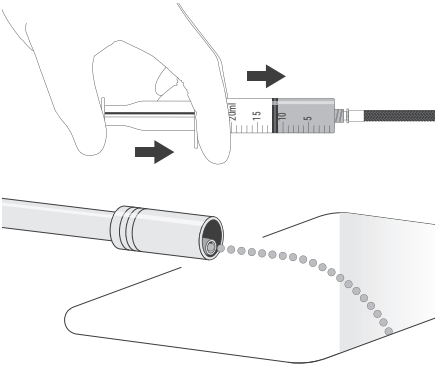
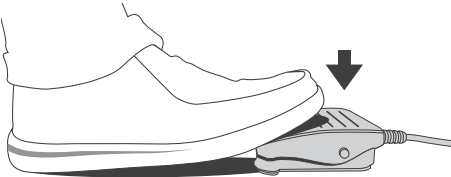
3. Attach the syringe to the waterline coming out of the back of the dental unit and tighten securely.



4. Turn on the dental unit, open the water setting to full and reduce power to low.



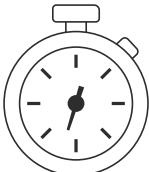
5. Press the foot pedal while compressing the plunger on the shock syringe. Continue until you see the colored shock solution emerging from the handpiece cable.



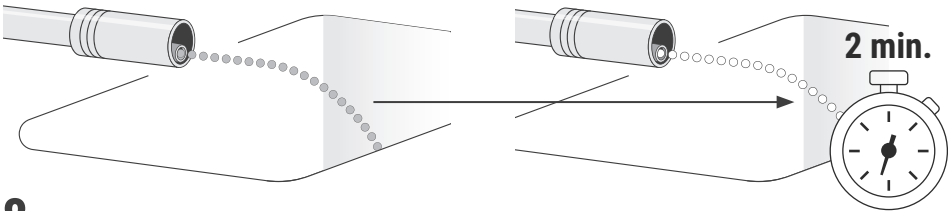
6. Turn the dental unit power off, attach the PureClarity and Sediment filters (per instructions on page 1) and reconnect the waterline to the dental unit.



7. Allow the shock solution to remain in the waterlines as per the manufacturer's recommended time.



8. Flush the waterline to remove shock. After the water turns clear (in the case of colored shock solutions), continue flushing for an additional two minutes to ensure complete removal of the shock from the waterline.



When to Replace your PureClarity Filter

Depending on the source water, total solids content therein, and volume of water passing through it, PureClarity Water filters typically last approximately 6 months. However, the filter should be replaced sooner, and immediately, if there is a noticeable drop in the flow of water coming out of the dental unit, the high speed handpiece, or the air/water syringe to which the PureClarity filter is connected.

Explanation of Symbols Used

	Professional use only
	Follow instructions for use
	Medical Safety Classification Symbol
	Warning
	Temperature limit
	Store product tightly sealed away from direct sunlight.
	Keep dry
	Package contents

	Batch code
	Catalogue / stock number
	Unique Device Identifier
	Medical Device
	Do not use if package is damaged
	Manufacturer
	Date of Manufacture

Mfd. for:

**parkell**  
Parkell, Inc.,  
300 Executive Drive, Edgewood, NY 11717  
Toll-Free: +1-800-243-7446  
Phone: 631-249-1134 • www.parkell.com

EC REP

Directa AB, Finvids väg 8,  
SE-194 47 Upplands Väsby, Sweden

UK  
CA

UKRP: Topdental (Products) Ltd,  
Unit 1, Holmfield Industrial Estate,  
Holmfield, Halifax, HX2 9TN, England, UK

CE